

DRG.No.	1491-201-H
USED ON	-

**DESIGN RIGHTS**

INTELLECTUAL PROPERTY OF EAGLE AUTOMATION SYSTEMS LIMITED  
 COPYRIGHT © NOT TO BE COPIED WITHOUT PERMISSION

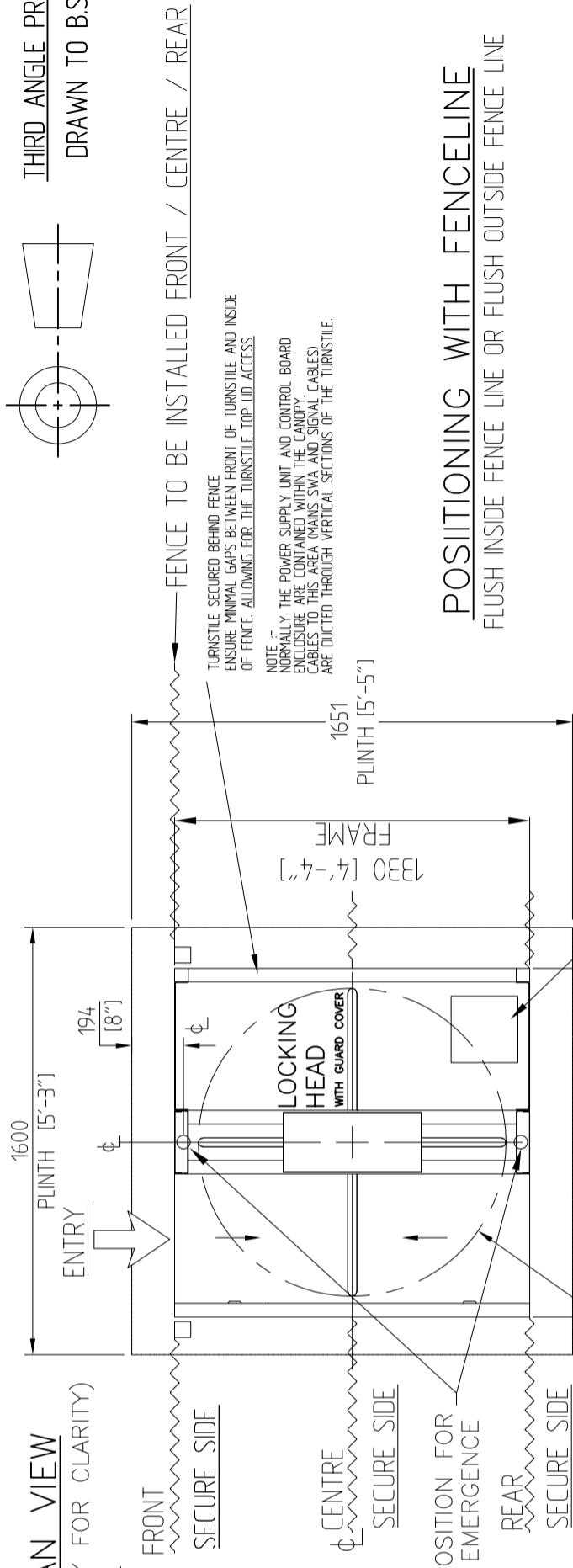
WARNING - SOME EAGLE AUTOMATION LIMITED PRODUCTS ARE ALSO THE  
 SUBJECT OF PATENT PROTECTION

EAGLE AUTOMATION LIMITED

RESERVE THE RIGHT TO MODIFY  
 THE DESIGN WITHOUT NOTICE

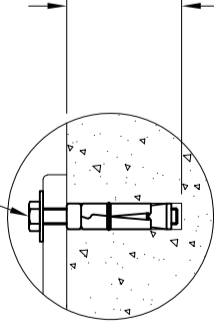
**PLAN VIEW**  
 (OMITTING CANOPY FOR CLARITY)

SELECTED HIDDEN DETAIL  
 OMITTED FOR CLARITY



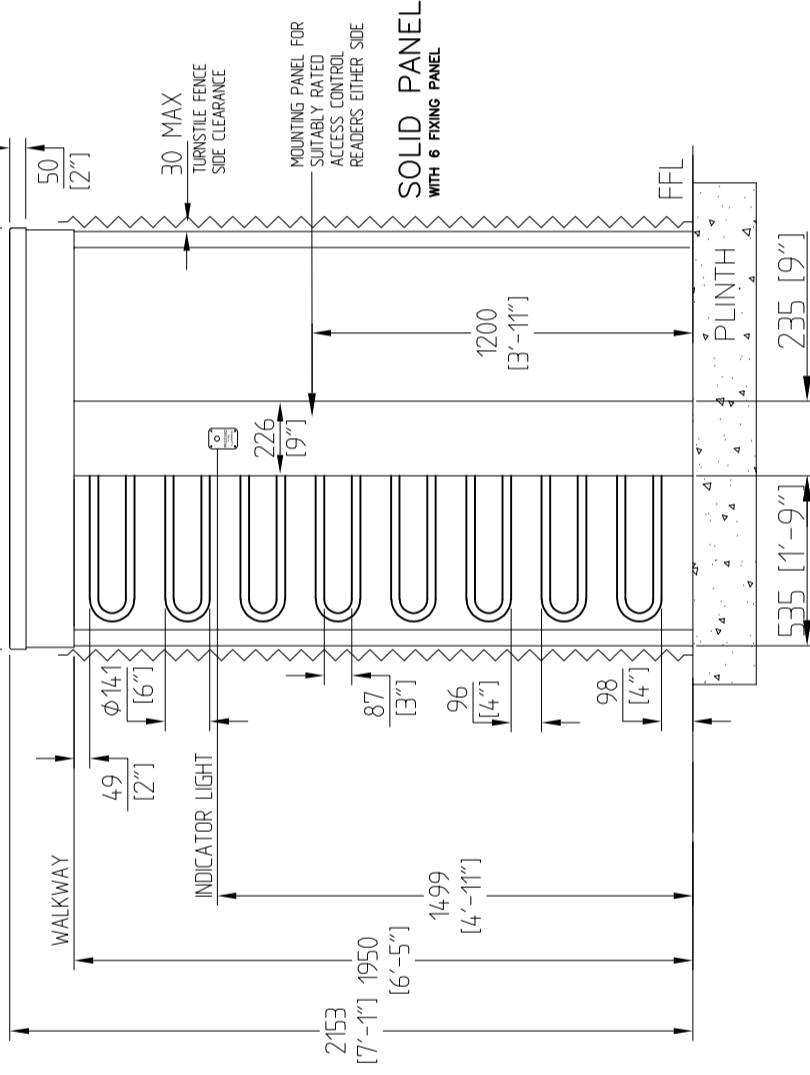
APPROX. POSITION FOR  
 Ø50 DUCT EMERGENCE

M10 RAWL BOLT  
 TIGHTEN TO 27Nm MAX  
 6 POS

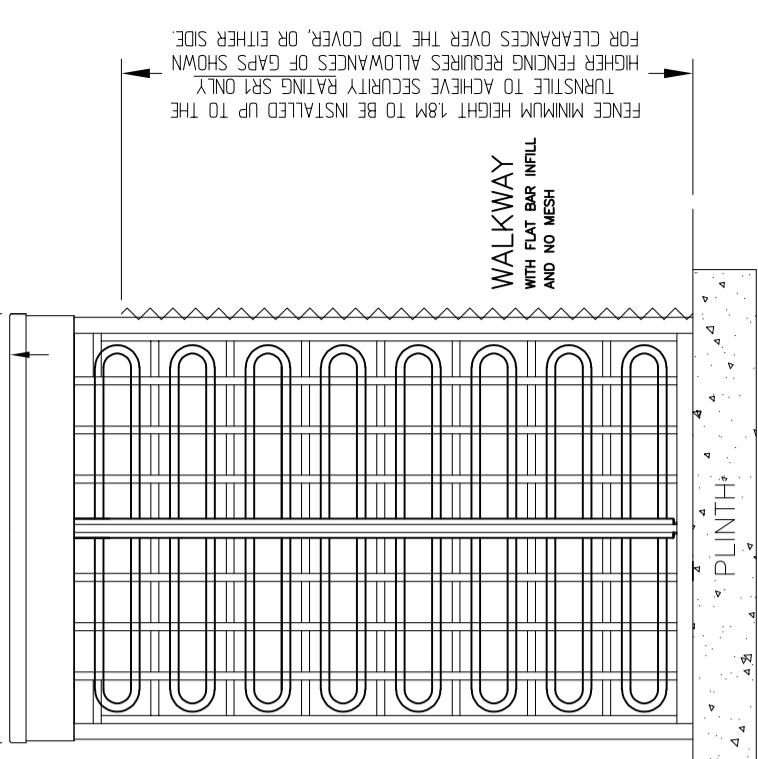


FIXING DETAIL

**ELEVATION VIEW**



**SIDE VIEW**



WALKWAY  
 WITH FLAT BAR INFILL  
 AND NO MESH

FENCE MINIMUM HEIGHT 1.8M TO BE INSTALLED UP TO THE  
 TURNSTILE TO ACHIEVE SECURITY RATING SR1 ONLY  
 HIGHER FENCING REQUIRES ALLOWANCES OF GAPS SHOWN  
 FOR CLEARANCES OVER THE TOP COVER, OR EITHER SIDE

**POSITIONING WITH FENCELINE**

FLUSH INSIDE FENCE LINE OR FLUSH OUTSIDE FENCE LINE

TURNSTILE SECURED BEHIND FENCE  
 ENSURE MINIMAL GAPS BETWEEN FRONT OF TURNSTILE AND INSIDE  
 OF FENCE, ALLOWING FOR THE TURNSTILE TOP LID ACCESS

NOTE  
 NORMALLY THE POWER SUPPLY UNIT AND CONTROL BOARD  
 ENCLOSURE ARE CONTAINED WITHIN THE CANOPY.  
 CABLES TO THIS AREA (MANS SWIA AND SIGNAL CABLES)  
 ARE DUCTED THROUGH VERTICAL SECTIONS OF THE TURNSTILE.

CONTROLS 400S-C1 PSU  
 IN TOP CANOPY AS STANDARD  
 OPTION TO MOVE OFF TURNSTILE FOR CONTROL,  
 ENSURE CABLES TO FEED THROUGH FRAMING

CONCRETE PLINTH  
 C27-C35 PAV1 OR EQUIVALENT TO  
 THE ANTI DIG ON EXISTING FENCING

**NOTE:**

THIS DESIGN LAYOUT HAS TIGHT GAPS BETWEEN ROTOR ARMS  
 AND IS BASED ON THE REQUIREMENTS FOR SECURITY FENCELINE TURNSTILES.

FAIL LOCKED ONLY WITH ENERGISED FREE SPIN AVAILABLE

MATERIAL		Eagle Automation Systems Ltd Focused on Protection and Security	
PROTECTIVE FINISH		STORES REF. BASED ON 491 - 430 STYLES	
TOLERANCES FOR DIMENSIONS		TITLE	
DIMS. SHOWN THUS >449 ±1		SINGLE FULL HEIGHT SECURITY TURNSTILE	
DIMS. SHOWN THUS 1 ±0.4		SR1	
DIMS. SHOWN THUS 10 ±0.15		SINGLE FULL HEIGHT SECURITY T/S WITH 'HOOPED BAR' ROTOR ARMS	
DIMS. SHOWN THUS 100 ±0.05		DRG.No.	
UNLESS OTHERWISE STATED		1491-201-H	
ALL DIMENSIONS IN MILLIMETRES		A3	
ISSUE	DATE	CHANGE NOTE	
DRAWN	MDK	CHECKED	CERTO.
		SCALE	N.T.S